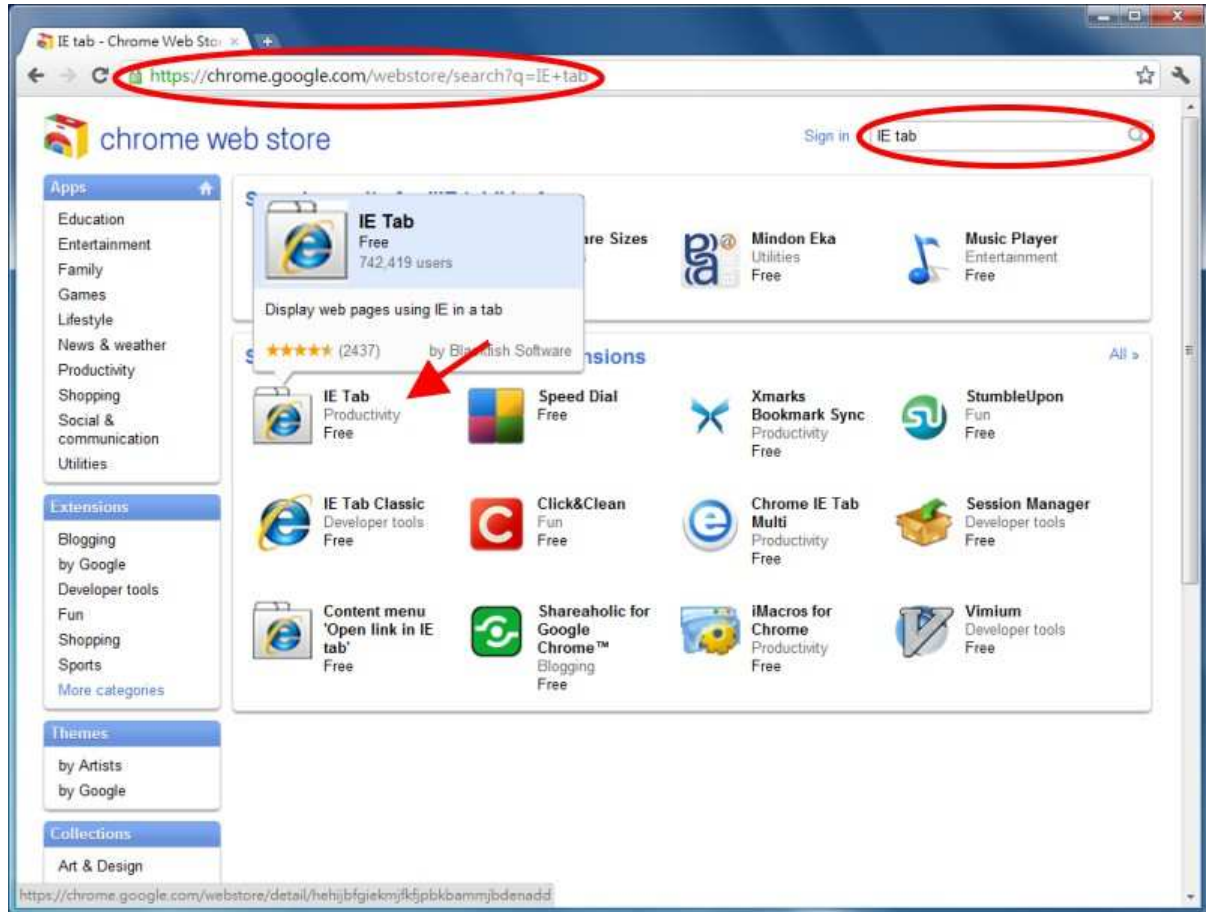
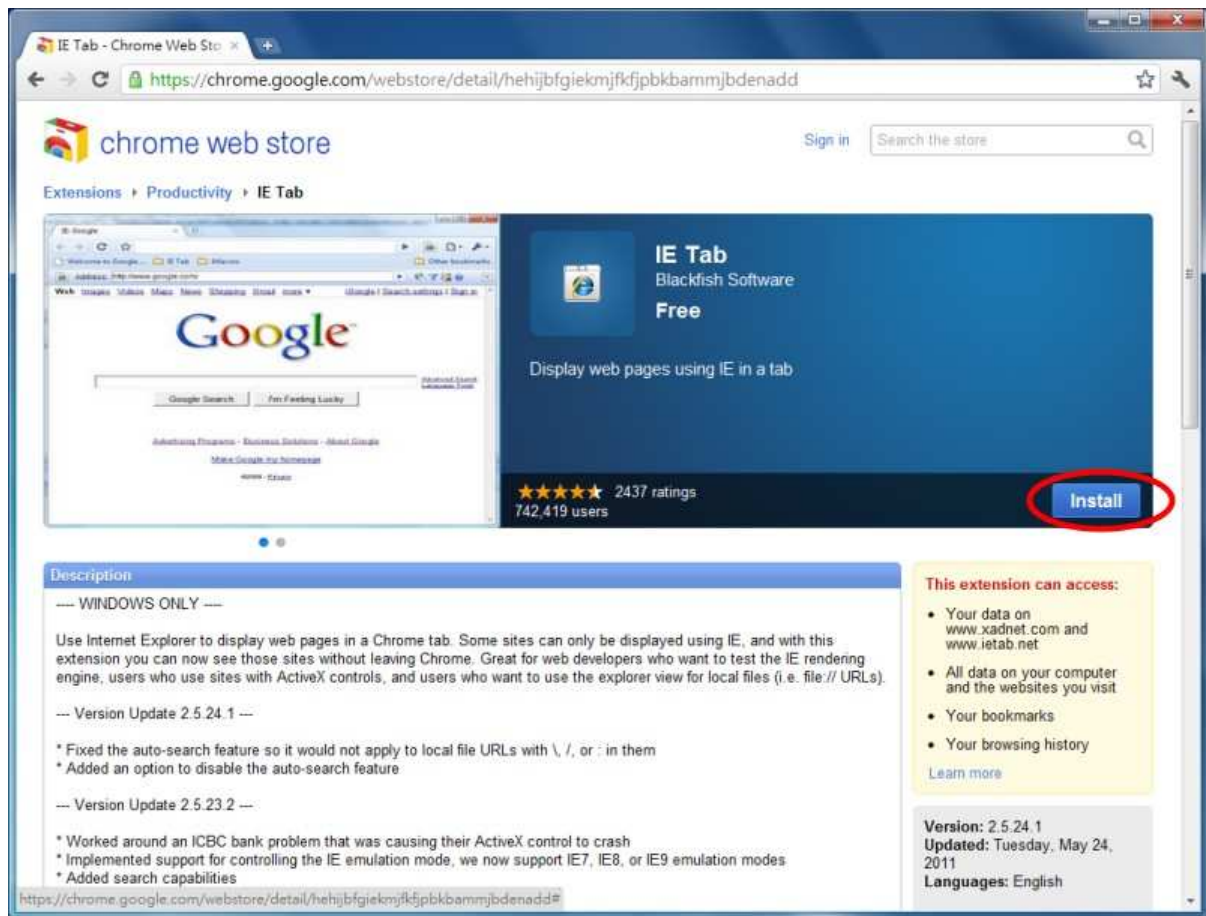


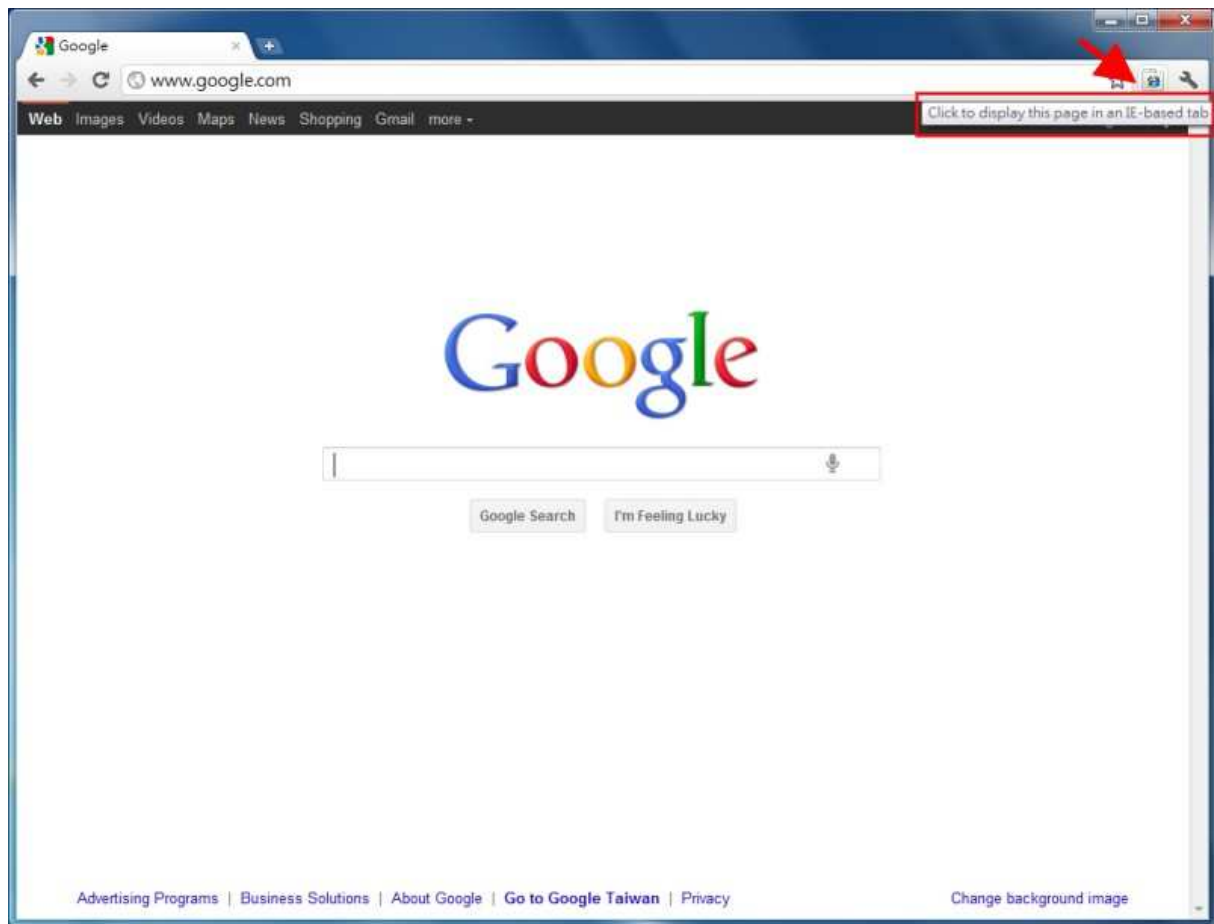
IE Tab Plug-in Guideline for Google Chrome



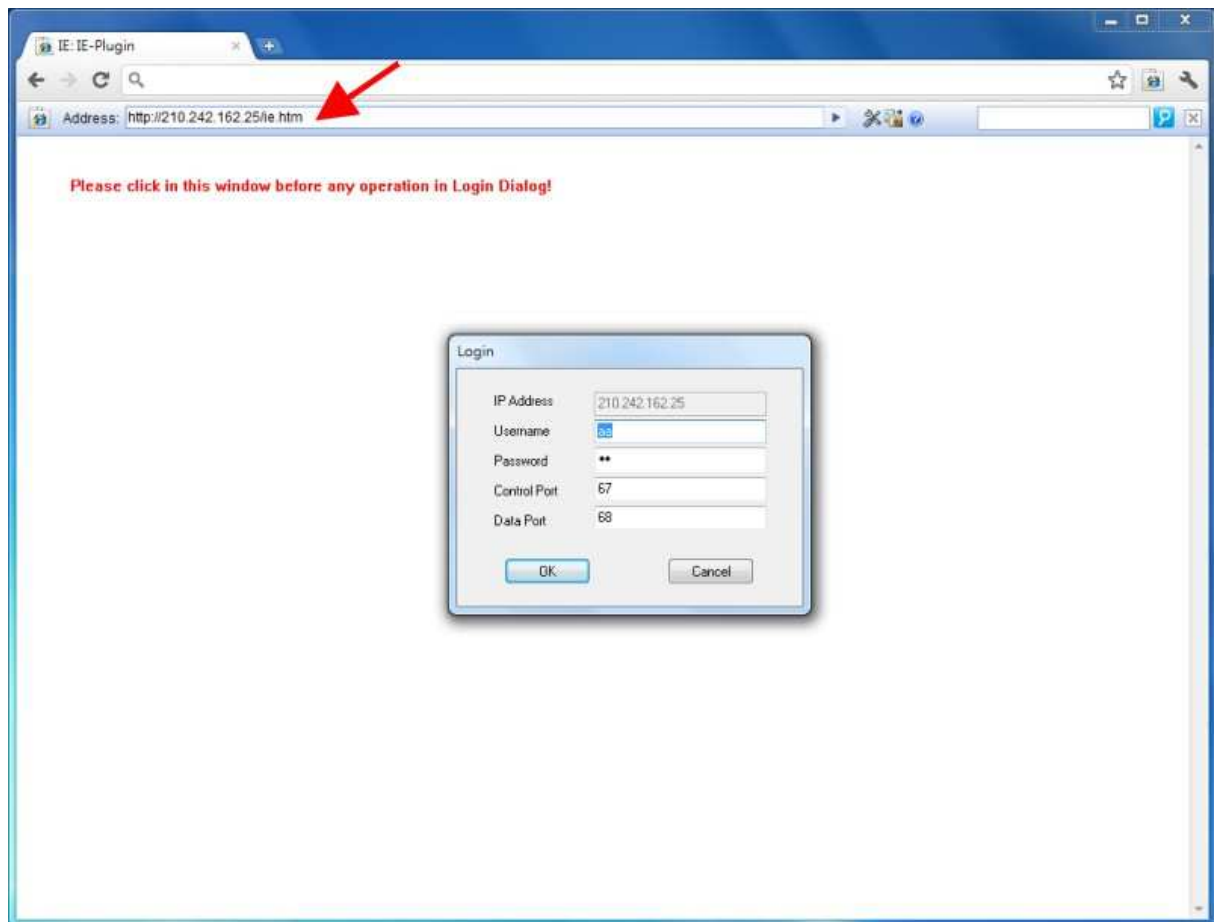
- 1.) After downloading Google Chrome browser, go to the Chrome web store and search "IE Tab" for the IE Tab plug-in app. Click on the IE Tab icon for installation page. (please refer to the above figure for reference)



- 2.) Click on the install button to download and install the IE Tab plug-in. Once you have finished downloading, the installation page will refresh and the install button area will show "installed."



- 3.) After installing the IE Tab plug-in, you will see a small IE icon appear on the top right hand corner. Click on the icon to display your current active page in an IE-based Tab. (please refer to the above figure for reference)



- 4.) Once your page is changed to IE-based display, you may enter your DVR URL or IP address where indicated to log in remotely. (please refer to the above figure for reference)