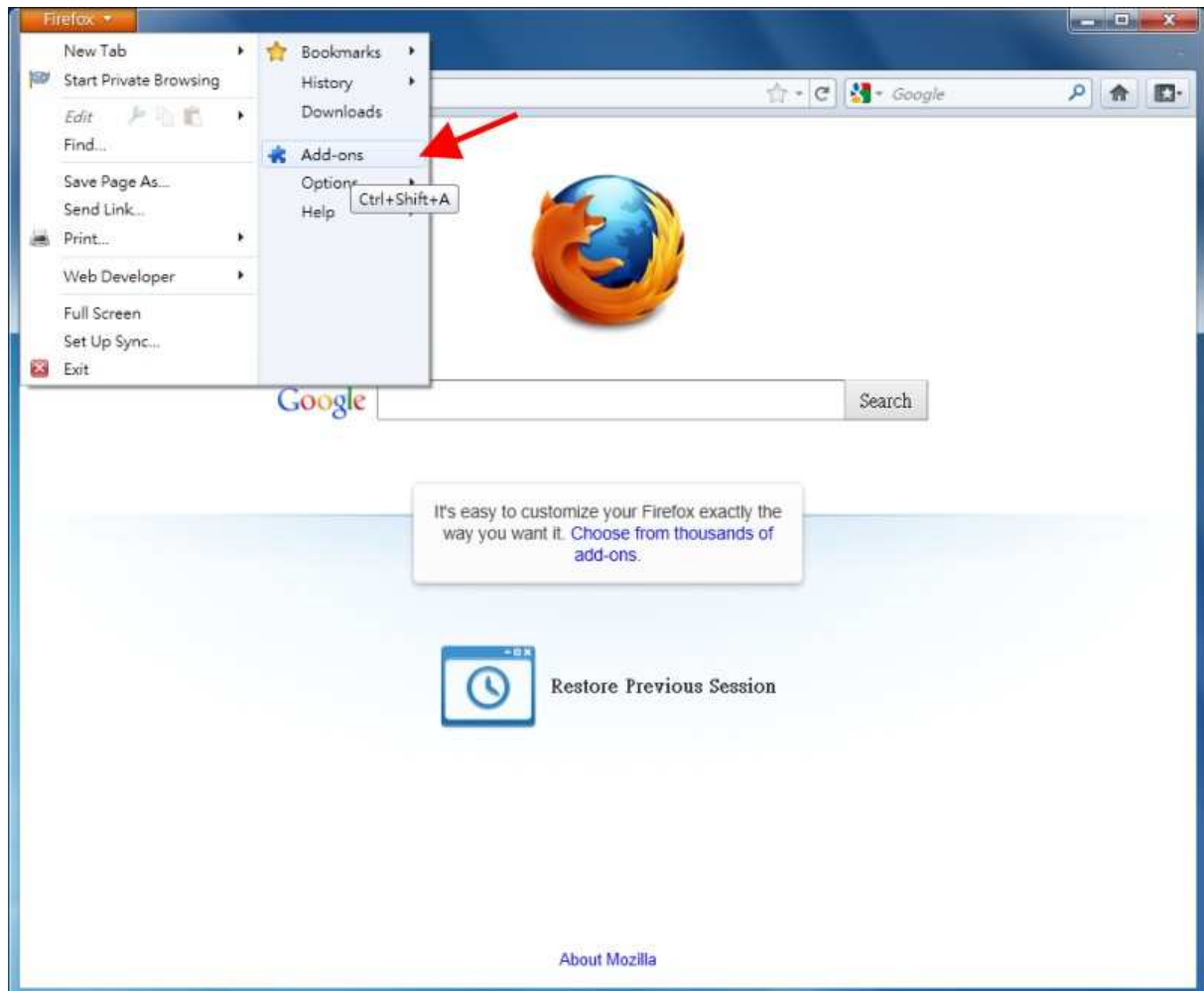
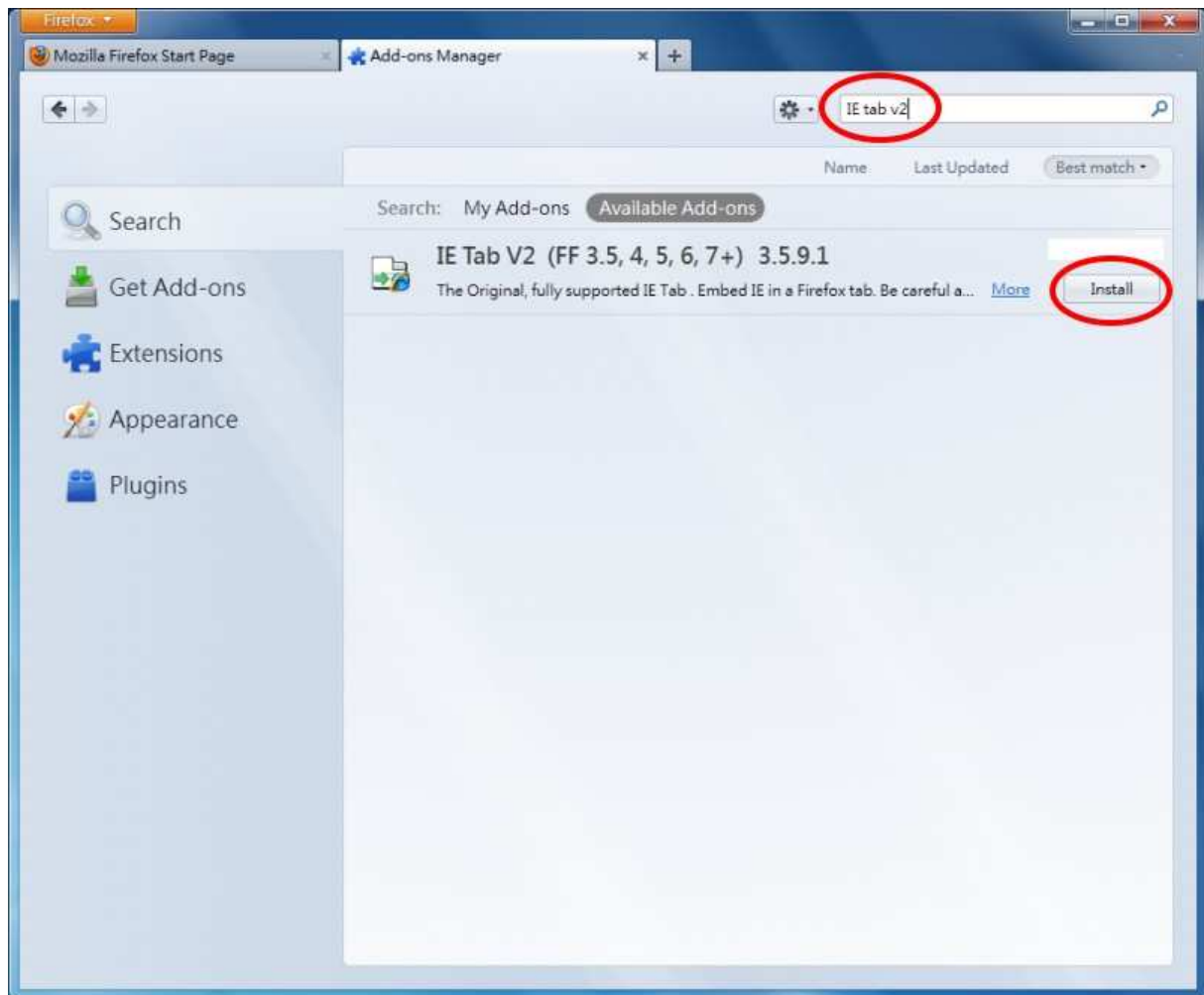


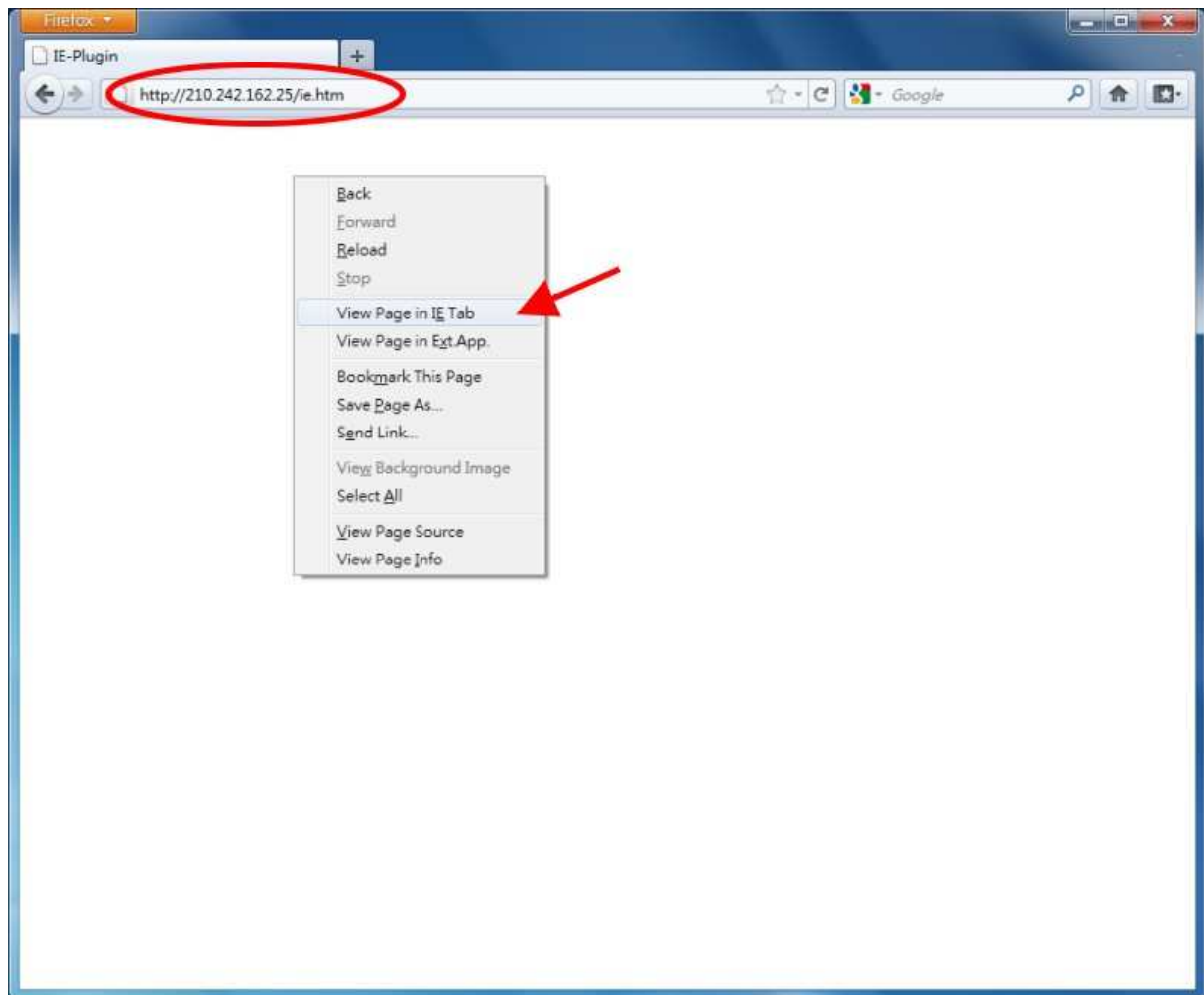
IE Tab V2 Add-on Guideline for Firefox 5.0



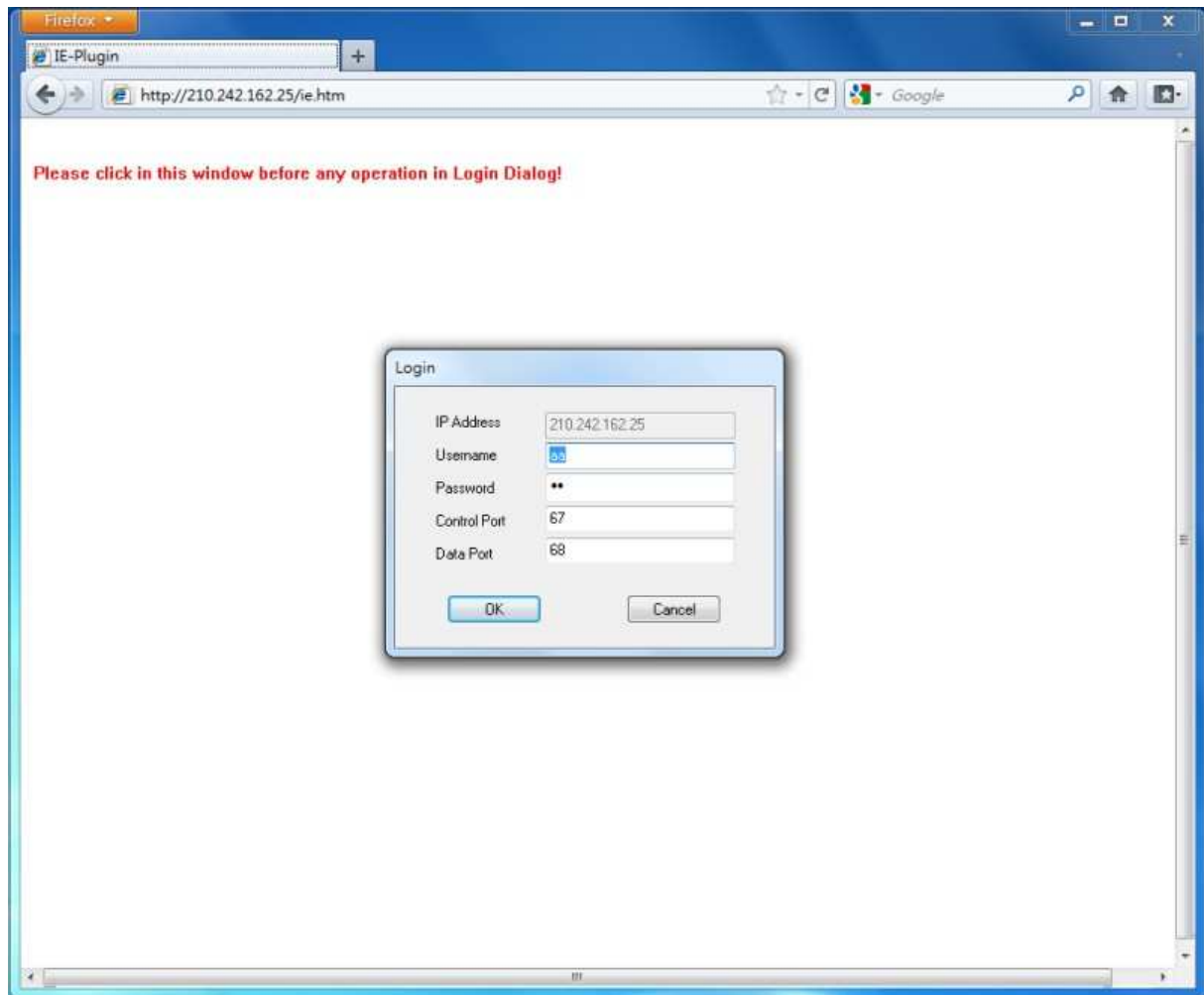
- 1.) After downloading Mozilla Firefox browser, click on the orange Firefox button on your top left hand corner, and then click on "Add-ons" to search for Firefox add-on programs. (please refer to the above figure for reference)



- 2.) Search for "IE Tab V2" in the search field on your top right hand corner. You will see the add on show up on your list. Click on the install button to download and install. After installation is complete, restart your Firefox browser.



3.) After installing the IE Tab V2 add-on, open your Firefox browser window and enter your DVR URL or IP address where indicated (circled). Right click on your page and select "View Page in IE Tab."



- 4.) Your browser window will reload and take you to the remote access login page.